



**INDUSTRIAL & COMMERCIAL**

**RESIDENTIAL**

**SALES & LEASING**

**PARTNERSHIPS**

**COMMERCIAL MANNER**

**COMPETITIVE NEUTRALITY**



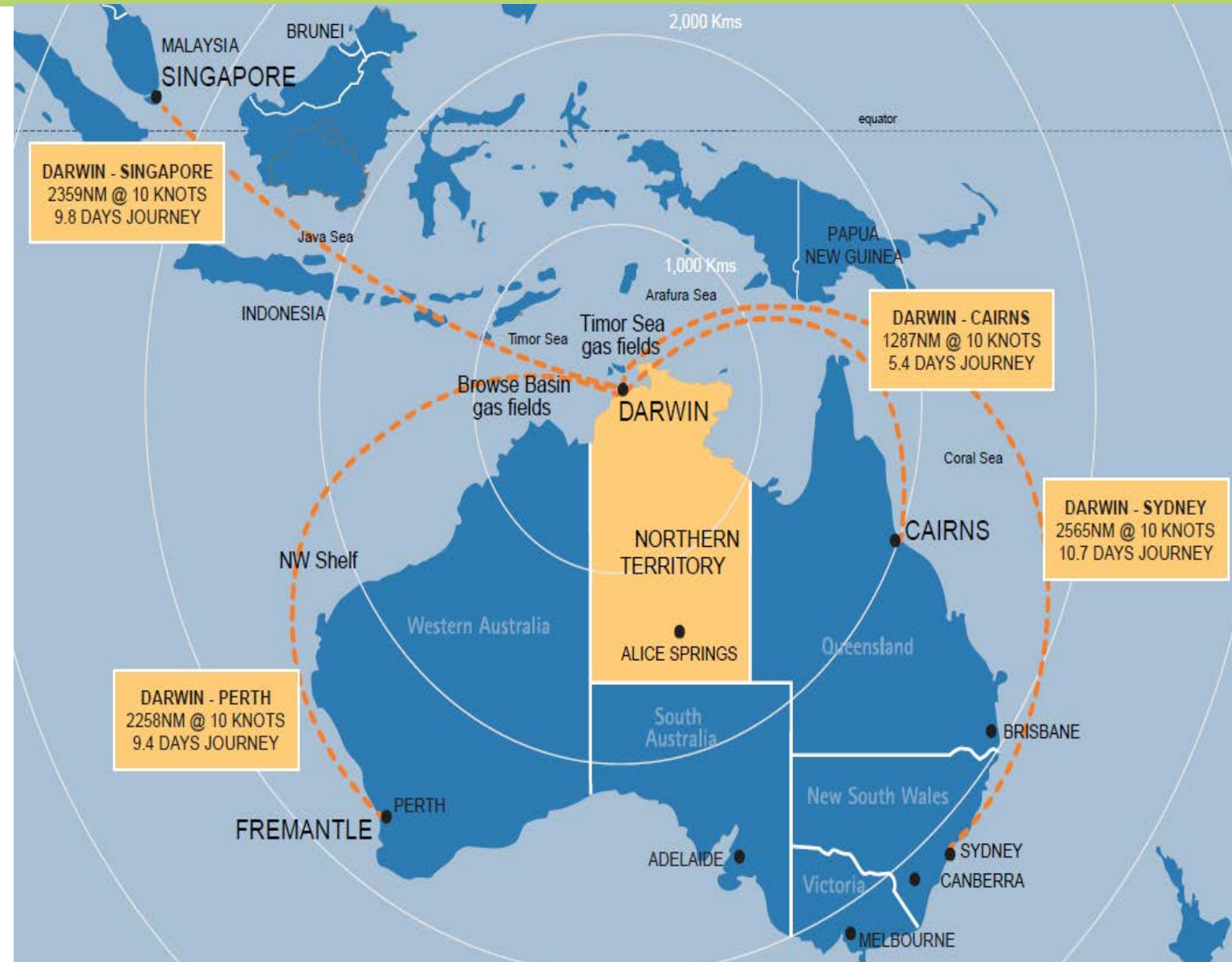
# Why Darwin?

## Geostrategic location:

1. Centrally positioned to service the Indo Pacific Region and vessels operating across north Australia.
2. Avoids lengthy travel interstate/overseas for marine maintenance.
3. The only capital city deep water harbour on Australia's northern coastline.
4. Capital city amenities including an international airport and full range of retail, education, commercial and industrial services.

**Size:** one of the largest natural harbours in the Southern Hemisphere - 22 times the size of Sydney Harbour.

**Capacity:** the harbour can accommodate any military vessel in the Australian, US and most regional inventories.



## DARWIN IS STRATEGICALLY LOCATED AS THE REGIONAL DEFENCE HUB IN NORTHERN AUSTRALIA



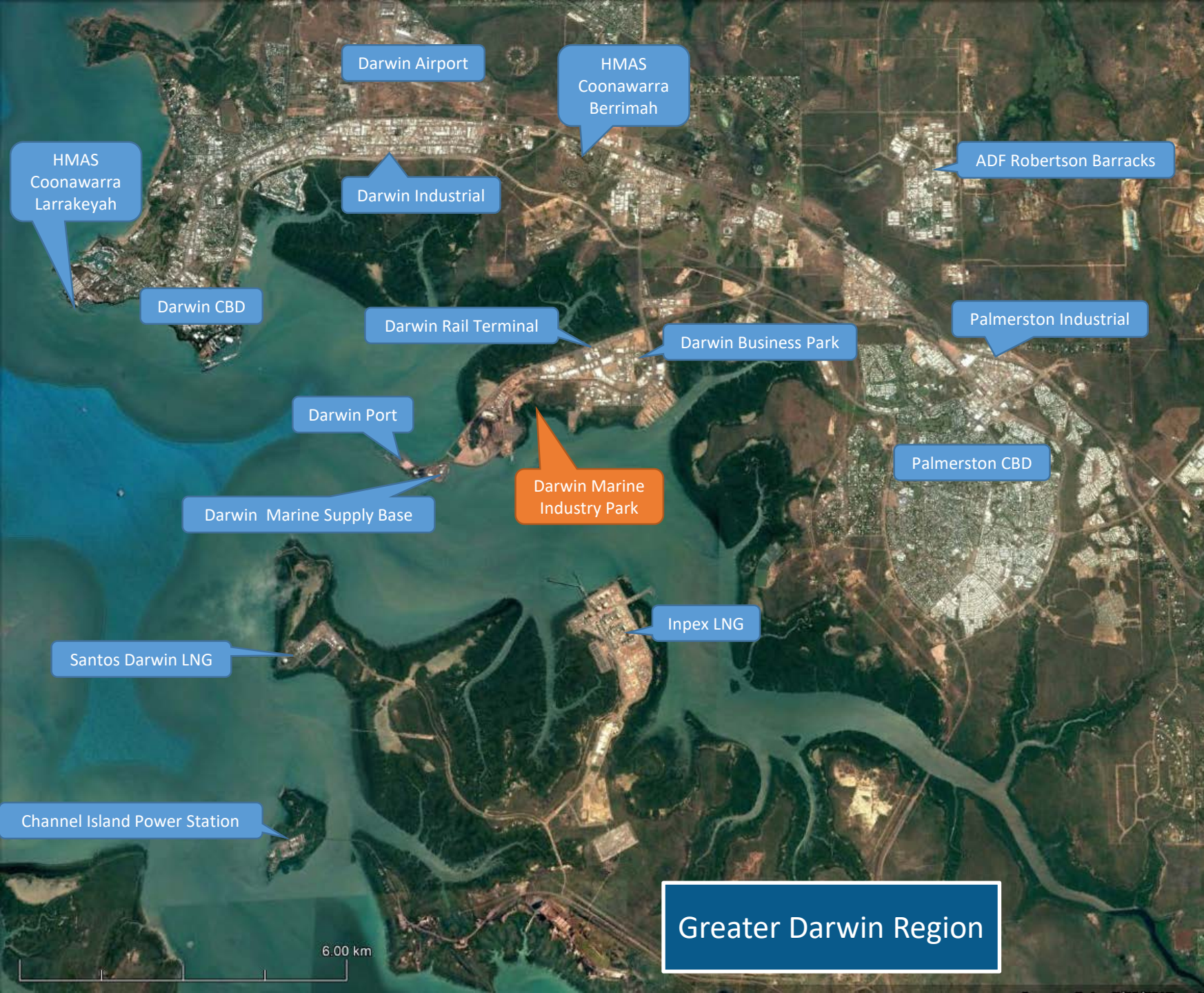
- Strategic location for Defence basing, operations and exercises, close to the Off Shore Patrol Vessels' (OPV) primary area of operations.
- Future regional defence hub to service South East Asia.
- Australia's most northern naval port with significant commercial traffic.
- Support and service hub for 3 LNG projects requiring significant maritime support of offshore assets.



- RMC North puts Darwin at the forefront of implementing Plan Galileo (Navy's maritime sustainment model).
- RMC North will be a class agnostic maintenance hub for the northern region.
- Navy aims for RMC North to be operational during 2023 (Source: Darwin Virtual Collaboration Session – May 2020).
- Commonwealth led with an embedded Regional Maintenance Provider.
- RMC North will have a significant relationship with the Capability Lifecycle Manager Contractor for OPV supply chain management via work programs.
- RMC North is envisaged to physically sit within Darwin's **Marine Industry Park** at East Arm.





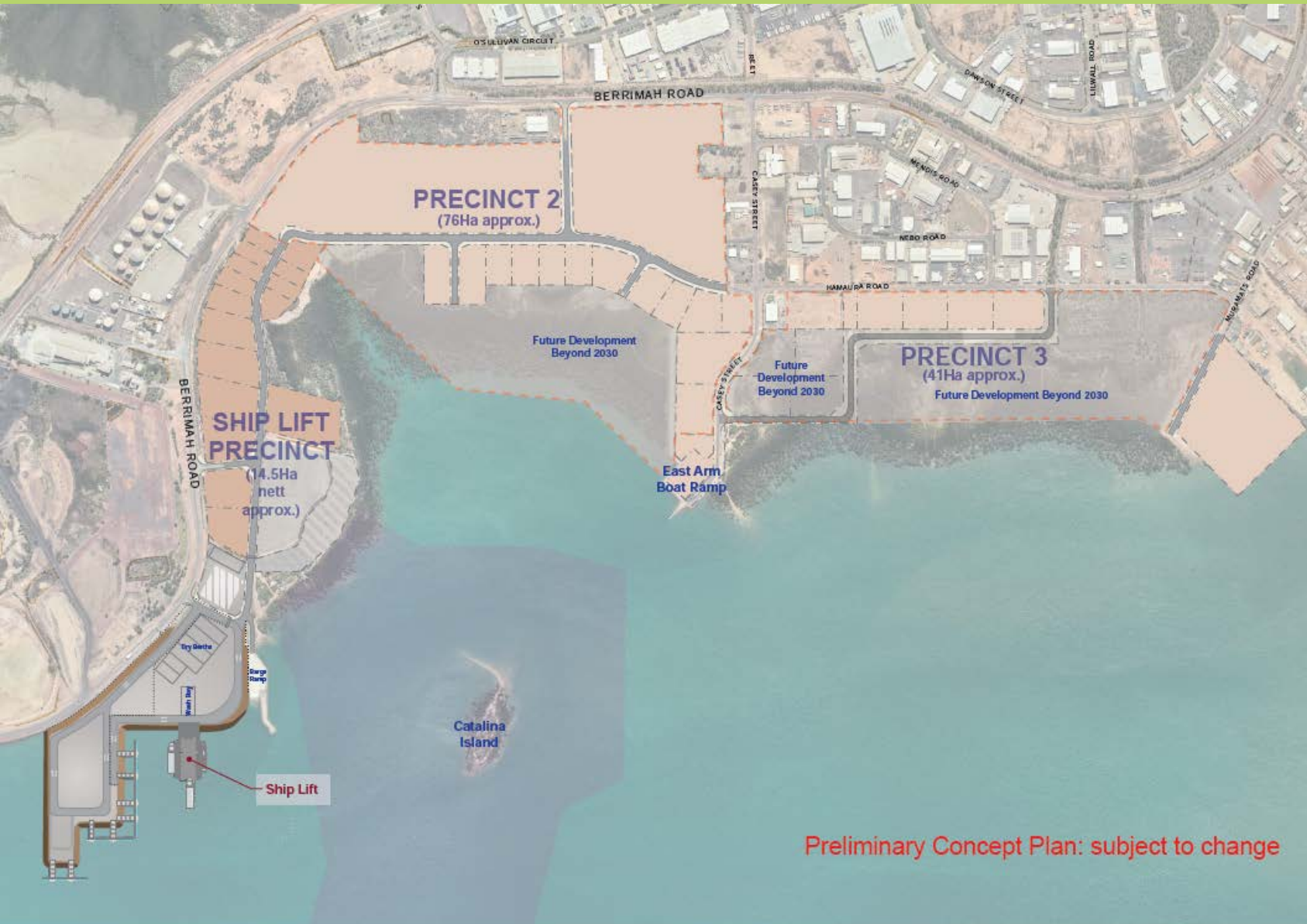


## Darwin Marine Industry Park - MIP

- Located adjacent to strategic infrastructure including Darwin Port, Marine Supply Base and Transcontinental Rail Freight Terminal.
- 18 kilometres from domestic and international airport terminal.
- Adjacent to the Darwin Business Park, being the Top End's premier logistics precinct.
- Centrally located to Greater Darwin's population.



# MIP - Concept Plan



Three precincts with area to grow to a national and internationally recognised marine service hub.

## Ship Lift Precinct:

- 5,000 tonne Ship Lift
- Serviced Lots
- Common Use:
  - Blast / Paint facility
  - Hardstand
  - Barge Ramp

## Precinct 2 (76 hectares):

- Expansion of serviced lots
- Support Industry
- Possible expansion of bulk liquids storage area

## Precinct 3 (41 hectares):

Potential maritime infrastructure:

- Marina
- Barge landings/coastal logistics facilities
- Seafood processing
- Marine support services



# MIP – Ship Lift Precinct

Serviced Lots  
(2022)

Common User  
Hardstand &  
Barge Ramp  
(existing)

Ship Lift  
(2024)

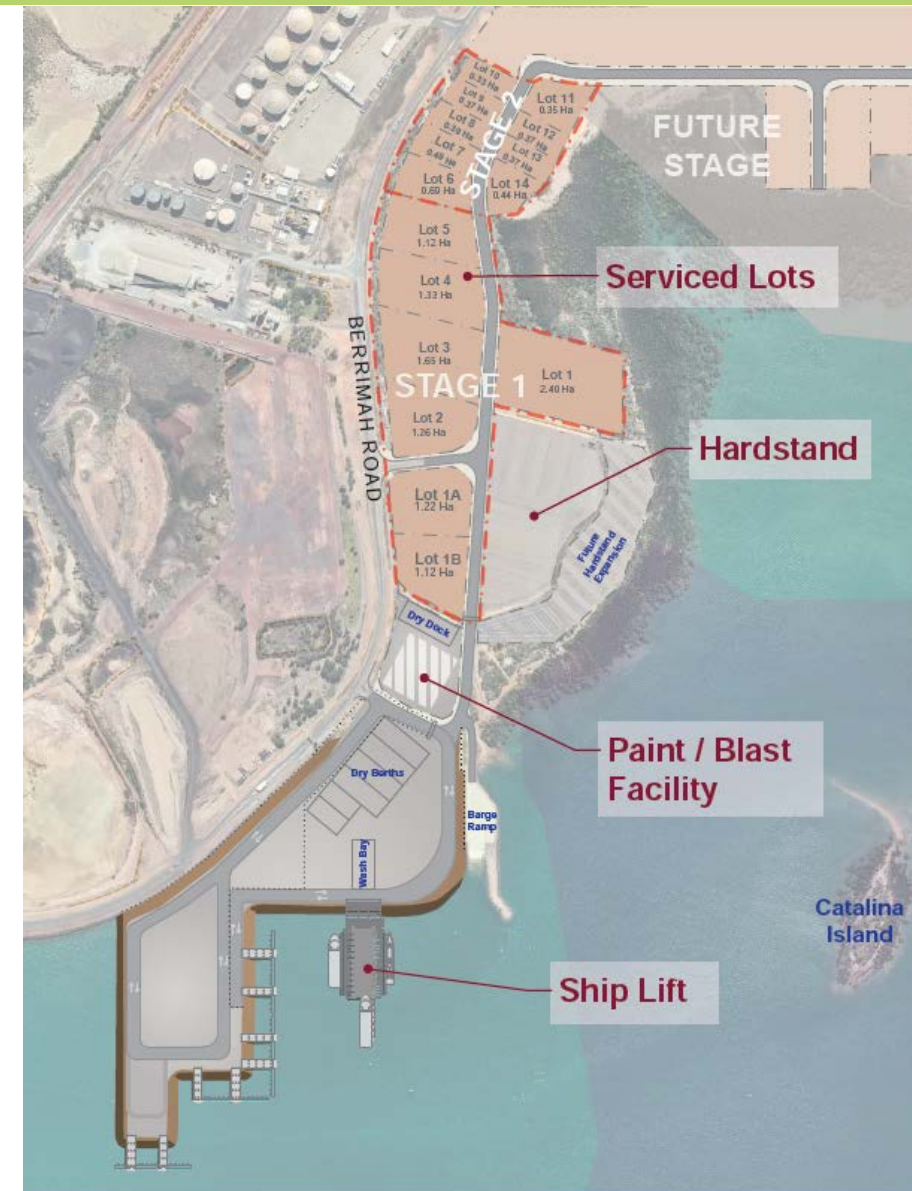




## Key design features:

- 103 metres and 26m wide mechanical platform ship lift (syncrolift).
- 5,000 tonnes lifting capacity.
- 60t/m maximum distributed load.
- Vessel draft up to 6m.
- 3 wet berths (wharves) .
- Common use wash bay, blast & paint facilities.
- 11 hectares of common use hardstand.
- Serviced lots: 15 hectares for workshops and support services. Planning approval secured for Stage 1.
- Compliance Standards:
  - Lloyds certified (or equivalent).
  - Meet DEF(AUST) 5000 (ADF Maritime Material Requirements Set).

**NB: THE ABOVE DESIGN FEATURES ARE SUBJECT TO DETAILED DESIGN**





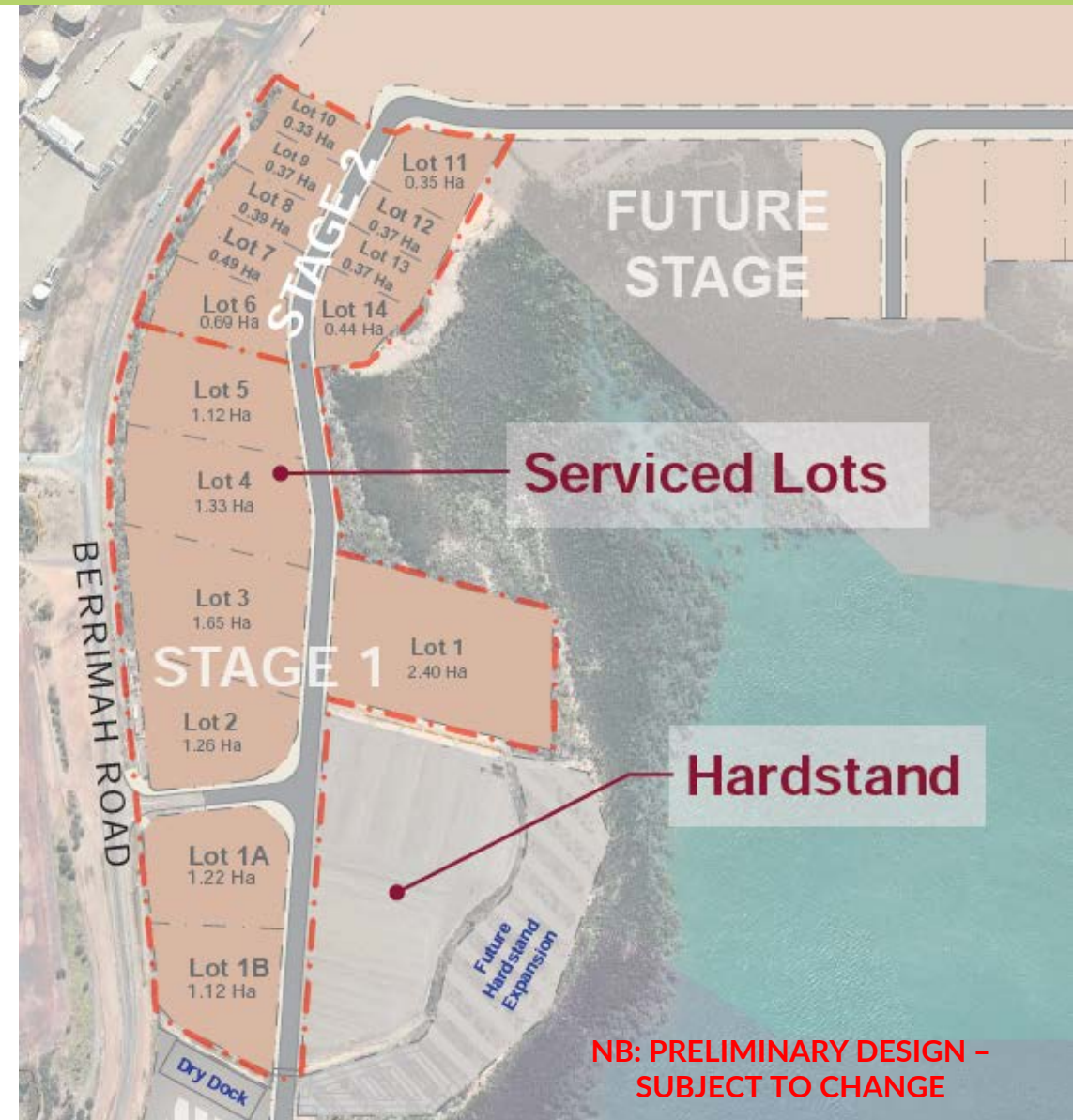
## Stage 1

- 11.5 hectares for prime contractors and larger SME's
- Sites from 1.1 to 2.4 hectares for vessel maintenance workshops.
- Access for vessels up to 60 metres via SPMT.
- Positioned close to ship lift and common use hardstand



## Stage 2

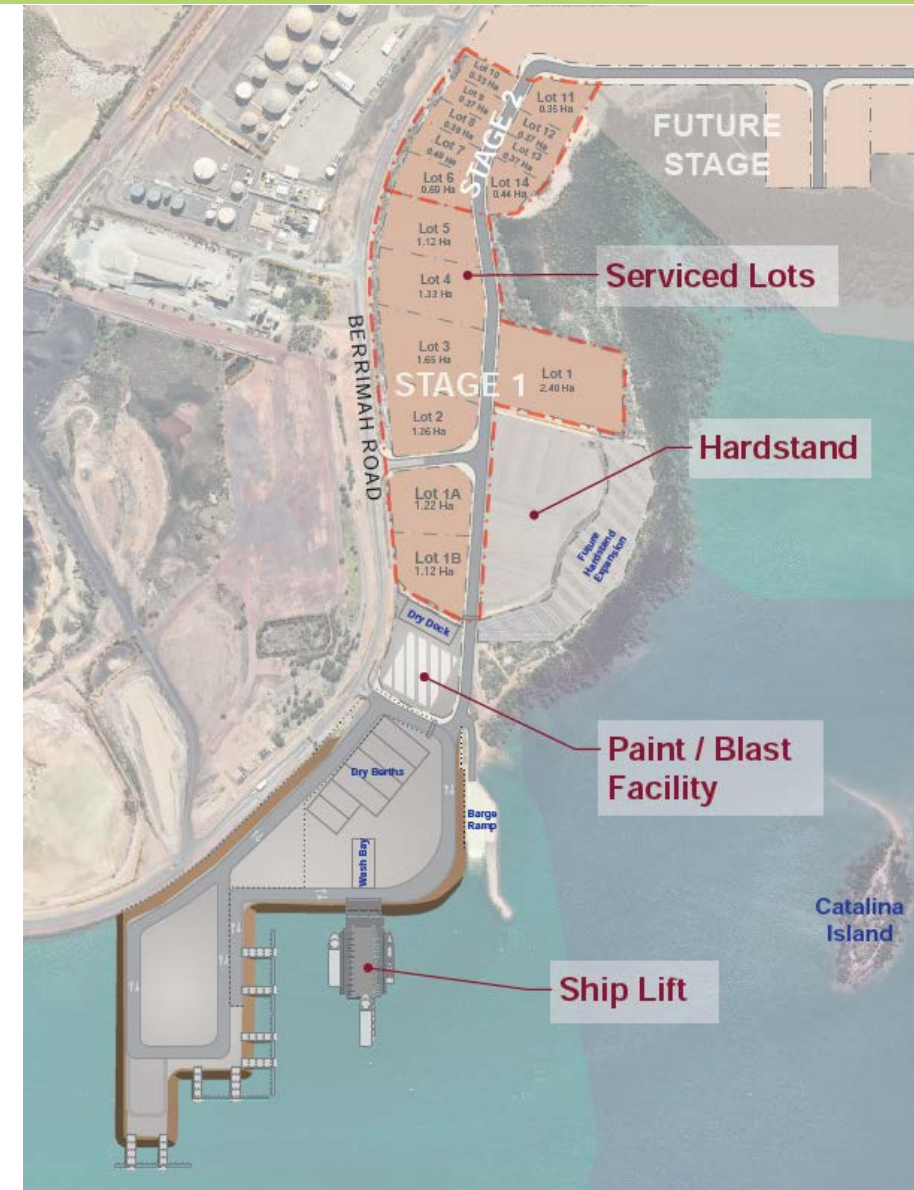
- Designed to accommodate SME's, training and supporting services.
- Sized from 3,300 to 6,900 square metres.





- NT Government has committed to deliver the largest ship lift in northern Australia.
- 5,000 tonnes lifting capacity with 3 wet berths operational from 2024.
- Common use wash bay, blast & paint facilities and 11 hectares of hardstand provide flexibility to expand and contract operations to meet demand.
- The logical home for Plan Galileo's Regional Maintenance Centre North.
- Compliance with Navy standards.
- Established common user all tide barge ramp and hardstand.
- Planning approval secured for Stage 1 Serviced Lots. Over 130 hectares of strategic industrial land available for development.
- Capital city facilities for attraction and retention of skilled workers.
- Central to air, road, rail and sea transport nodes.

**NB: THE ABOVE DESIGN FEATURES ARE SUBJECT TO DETAILED DESIGN**





To register your interest, please contact:



Paul Schneider | Project Director  
P: 08 8944 0926 | 0409 372 482  
E: [paul.schneider@landdevcorp.com.au](mailto:paul.schneider@landdevcorp.com.au)



Hannah Barraza | Business Director  
P: 08 8944 0909 | 0421 676 165  
E: [hannah.barraza@landdevcorp.com.au](mailto:hannah.barraza@landdevcorp.com.au)