



**INDUSTRIAL & COMMERCIAL**

**RESIDENTIAL**

**SALES & LEASING**

**PARTNERSHIPS**

**COMMERCIAL MANNER**

**COMPETITIVE NEUTRALITY**

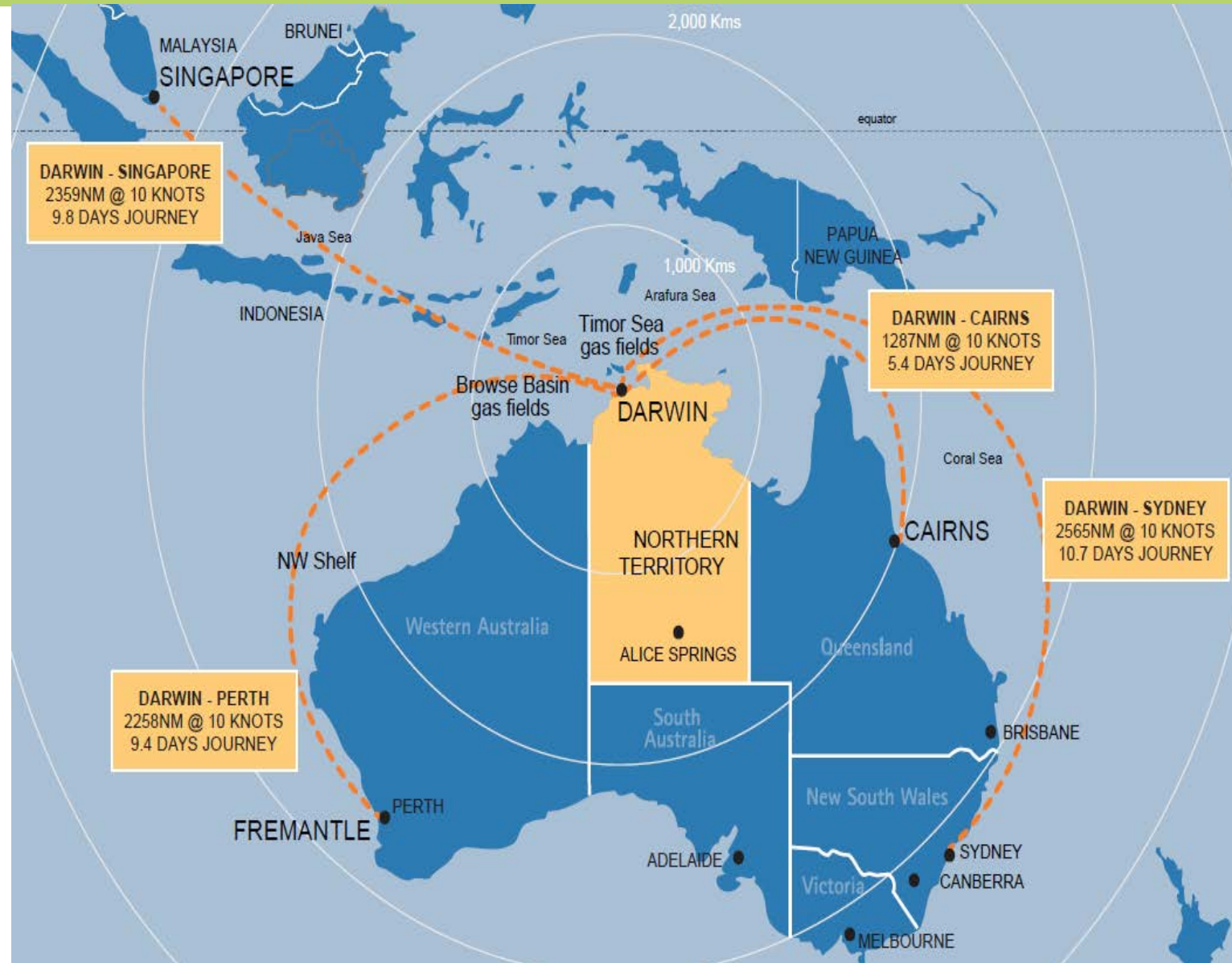
# Why Darwin?

## Geostrategic location:

1. Centrally positioned to service the Indo Pacific Region and vessels operating across north Australia.
2. Avoid lengthy travel interstate/overseas for servicing.
3. The only capital city deep water harbour on Australia's northern coastline. Darwin has a full range of retail, commercial and industrial services and international airport.

**Size:** one of the largest natural harbours in the Southern Hemisphere - 22 times the size of Sydney Harbour.

**Capacity:** the harbour can accommodate any military vessel in the Australian, US and most regional inventories.



## DARWIN IS STRATEGICALLY LOCATED AS THE REGIONAL DEFENCE HUB IN NORTHERN AUSTRALIA



- Strategic location for Defence basing, operations and exercises, close to the Off Shore Patrol Vessels' primary area of operations.
- Future regional defence hub to service South East Asia.
- Australia's most northern naval port with significant commercial traffic.
- Support and service hub for 3 LNG projects requiring significant maritime support of offshore assets.

- RMC North puts Darwin at the forefront of implementing Plan Galileo (Navy's maritime sustainment model).
- RMC North will be a class agnostic maintenance hub for the northern region.
- RMC North to be operating by mid 2023.
- Commonwealth led with an embedded Regional Maintenance Provider.
- RMC North will have a significant relationship with the Capability Lifecycle Manager Contractor for OPV supply chain management via work programs.
- RMC North is envisaged to physically sit within Darwin's *Marine Industry Park* at East Arm.



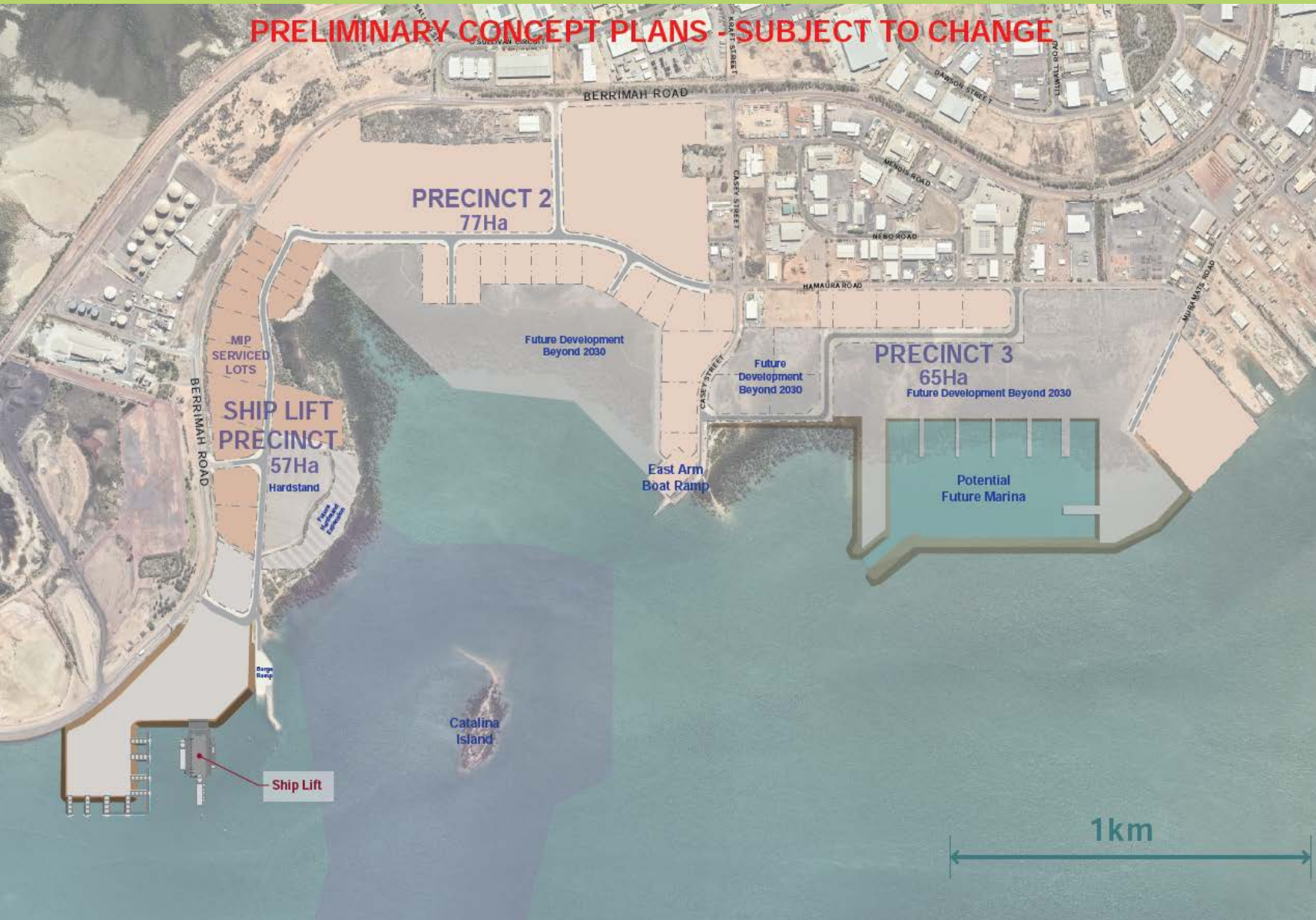
## Darwin Marine Industry Park - MIP

- Located adjacent to strategic infrastructure including Darwin Port, Marine Supply Base and Transcontinental Rail Freight Terminal.
- Adjacent to Darwin's premier logistics precinct at East Arm.
- Centrally located to Greater Darwin's population.



Greater Darwin Region

# MIP - Concept Plan



Three precincts with area to grow to a national and internationally recognised marine service hub.

## Ship Lift Precinct:

- 5,000 tonne Ship Lift.
- Barge Ramp.
- Hardstand.
- Serviced Lots.

## Precinct 2 (76 hectares):

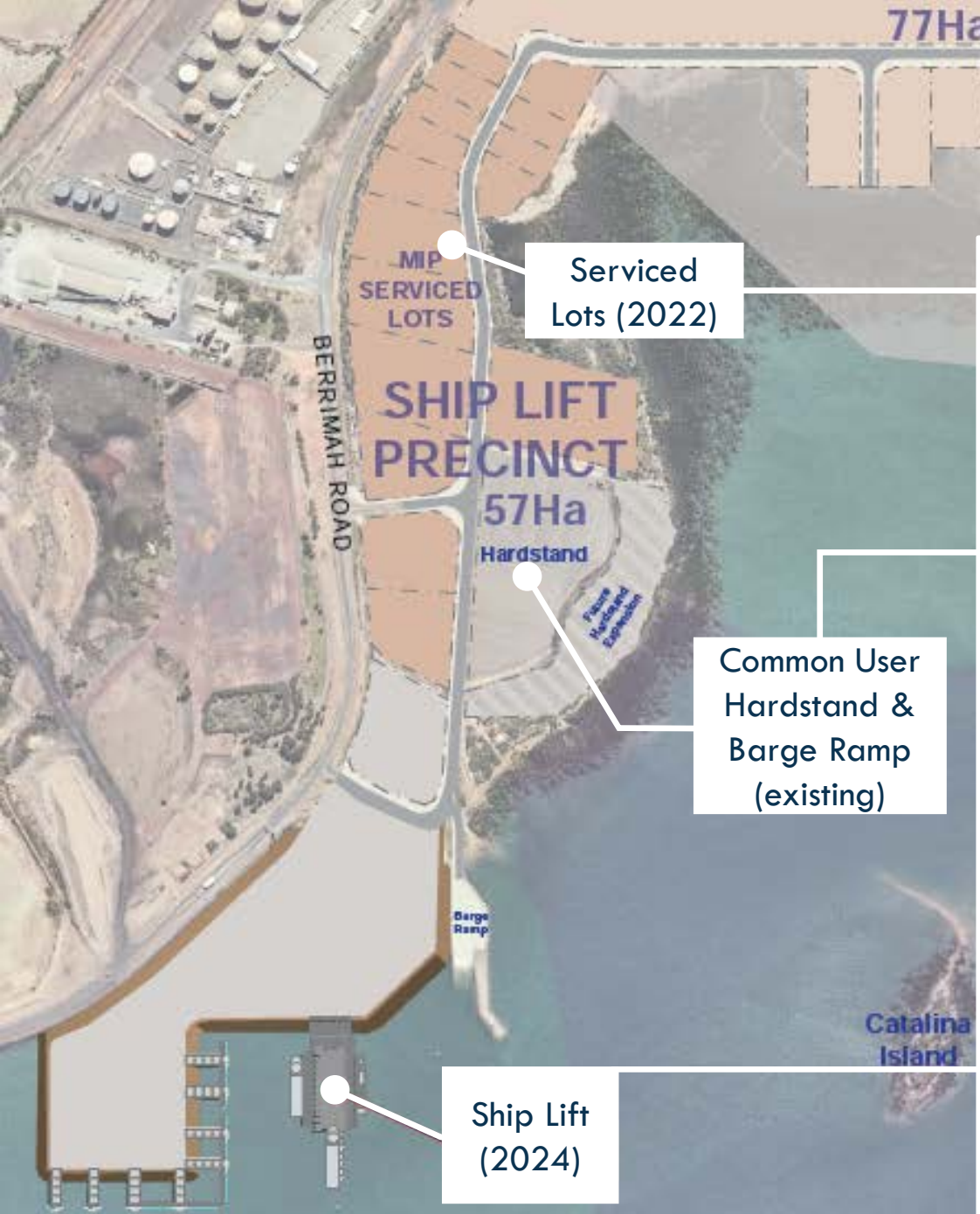
- Expansion of serviced lots.
- Support Industry.
- Possible expansion of bulk liquids storage area.

## Precinct 3 (41 hectares):

Potential maritime infrastructure:

- Marina
- Barge landings/coastal logistics facilities
- Seafood processing
- Support of marine services.

# MIP – Ship Lift Precinct



## Key design features:

- 103 metres and 26m wide mechanical platform ship lift (syncrolift).
- 5,000 tonnes lifting capacity.
- 60t/m maximum distributed load.
- Vessel draft up to 6m.
- 3 wet berths (wharves) .
- Common use wash bay, blast & paint facilities.
- 11 hectares of hardstand.
- Serviced lots: 15 hectares for workshops and support services. Planning approval secured for Stage 1.
- Lloyds certified (or equivalent).
- Meet DEF(AUST) 5000 (ADF Maritime Material Requirements Set).

**NB: THE ABOVE DESIGN FEATURES ARE SUBJECT TO DETAILED DESIGN**





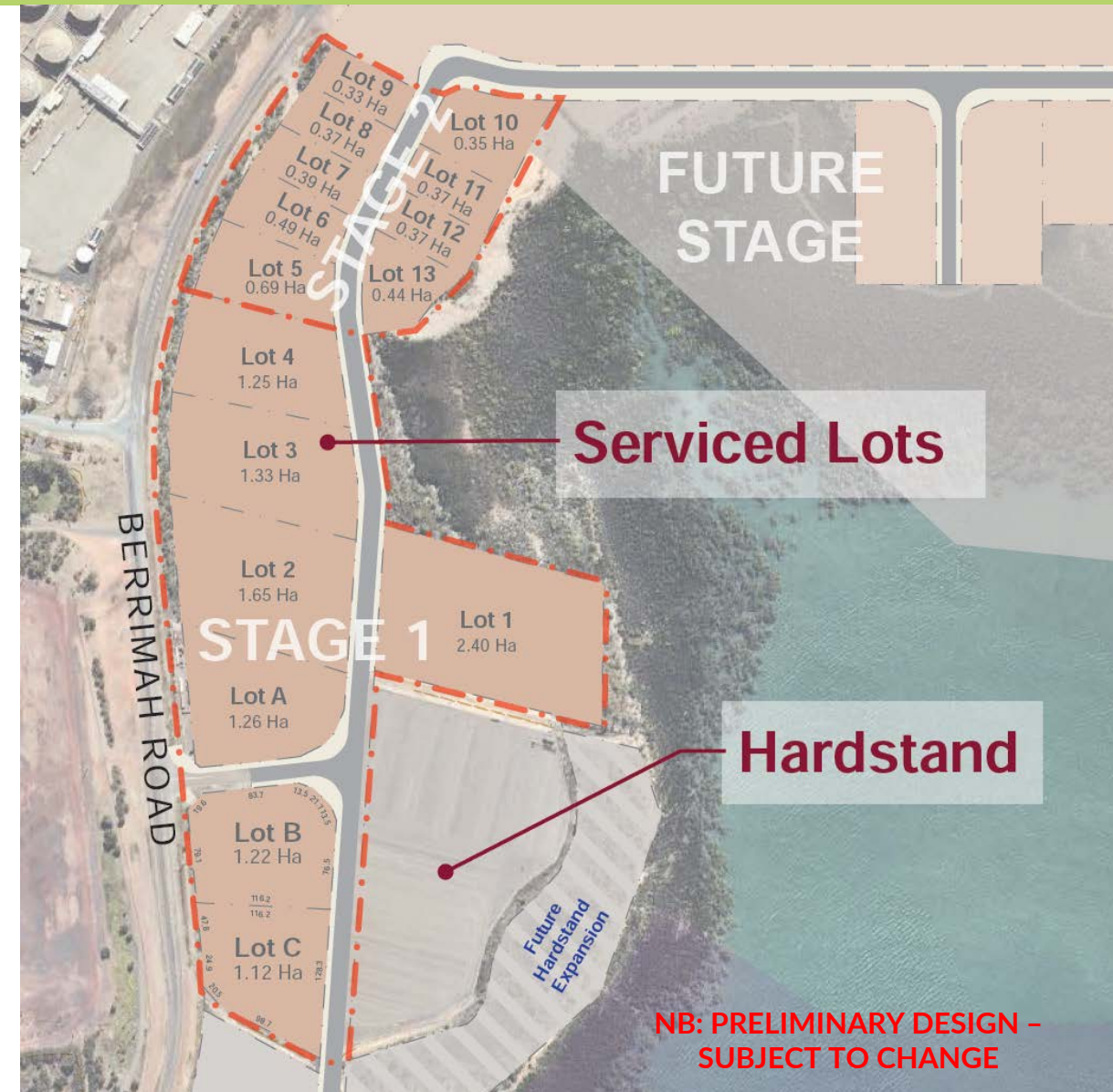
## Stage 1

- 11.5 hectares for prime contractors and larger SME's
- Sites from 1.1 to 2.4 hectares for large vessel maintenance workshops.
- Access for vessels up to 60 metres via SPMT.
- Positioned close to ship lift and common use hardstand



## Stage 2

- Designed to accommodate SME's, training and supporting services.
- Sized from 3,300 to 6,900 square metres.



To register your interest, please contact:



Paul Schneider | Project Director  
P: 08 8944 0926 | 0409 372 482  
E: [paul.schneider@landdevcorp.com.au](mailto:paul.schneider@landdevcorp.com.au)



Hannah Barraza | Business Director  
P: 08 8944 0909 | 0421 676 165  
E: [hannah.barraza@landdevcorp.com.au](mailto:hannah.barraza@landdevcorp.com.au)