

STRATEGIC LAND FOR OIL & GAS  
IN THE NORTHERN TERRITORY



LAND DEVELOPMENT CORPORATION

# STRATEGIC LAND FOR OIL & GAS

NORTHERN TERRITORY



[www.landdevcorp.com.au](http://www.landdevcorp.com.au)



# MIDDLE ARM INDUSTRIAL PRECINCT

## A 600 HECTARE ESTATE FOR OIL & GAS DEVELOPMENT



### Middle Arm Industrial Precinct is home to ConocoPhillips Darwin LNG Plant and INPEX Ichthys Onshore LNG Processing Facility.

#### The vision

Middle Arm Industrial Precinct is home to the Northern Territory's largest and most productive oil & gas and mineral processing companies. The estate is set to become a world class hub for gas production and manufacturing by 2030. Located on the Middle Arm Peninsula, the master-planned 600 hectare estate will provide a variety of lot sizes for sale or lease. All lots will have access to an extensive product corridor network and planned water access to Darwin Harbour.

High and low pressure gas availability supports co-location with feedstock suppliers in the product corridor. The estate also benefits from two power stations, well situated to service the requirements of future occupants and their operations.

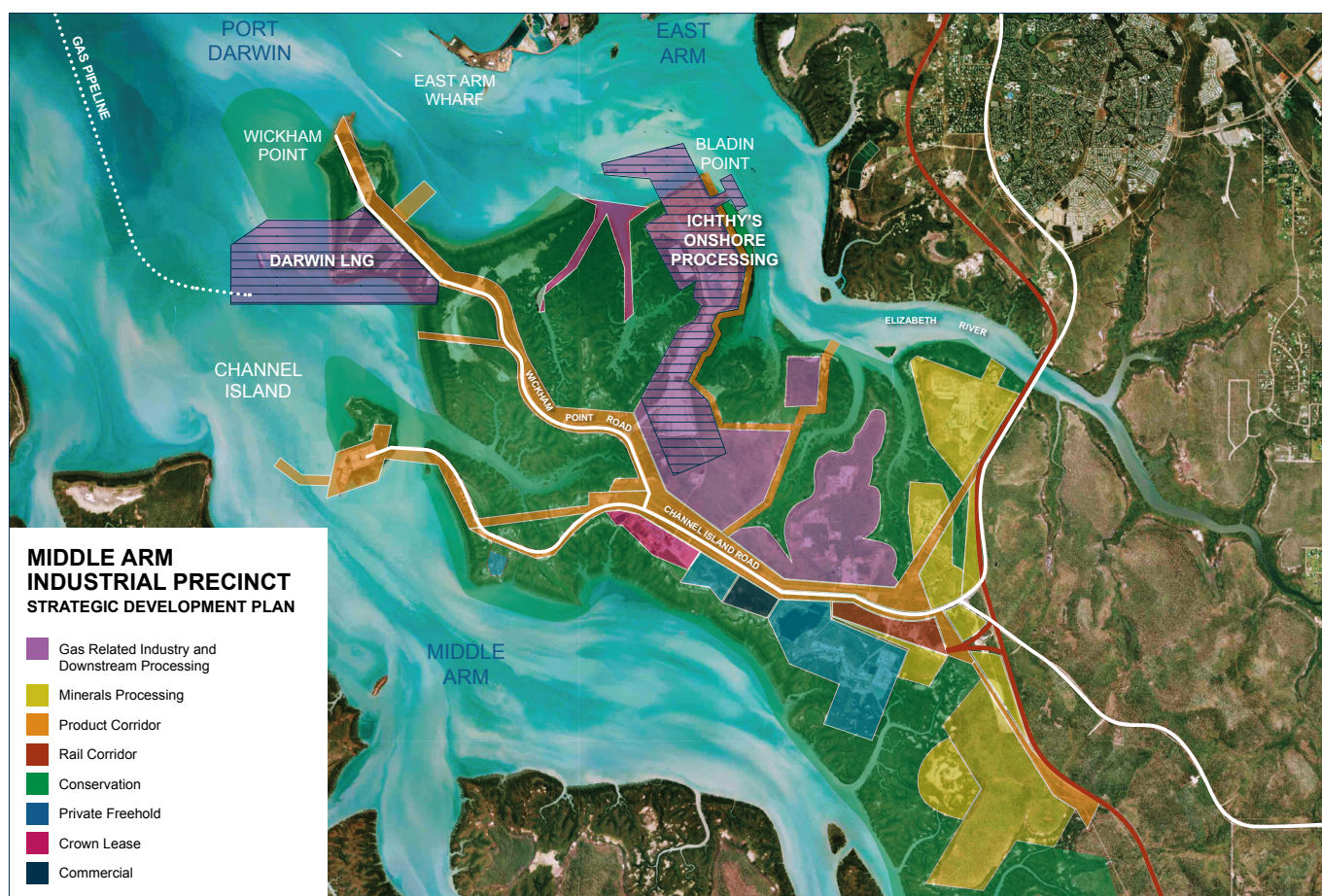
#### Location

The Middle Arm Industrial Precinct is located 30 minutes from the Darwin CBD and only 15 minutes from Palmerston which offers a range of shopping centres, social venues, sporting clubs and educational facilities nearby.

East Arm Logistics Precinct is accessible in 20 minutes and is home to the Darwin Port, Darwin Rail Freight Terminal and logistical assets offering the benefits of proximity, including:

- **Marine Industry Park**
  - First Point of Entry all-tide Barge Ramp
  - 9 Hectare Hardstand
  - Ship Lift (operational 2024)
- **Darwin Business Park**
  - Home to on-shore supply bases for INPEX, ConocoPhillips and Shell Prelude
  - Serviced lots available for sale or lease

Middle Arm Industrial Precinct is also situated within close proximity to Weddell Power Station and the Channel Island Power Station as well as the Amadeus Basin Gas Pipeline.



## Middle Arm Industrial Precinct Strategic Development Plan

The Land Development Corporation proposes to develop two estates at Middle Arm:

**Kittyhawk Estate** - The first stage of this 300 hectare estate has commenced construction.

**Spitfire Estate** - This 300 hectare estate will be developed as demand requires.

The product corridor provides an area for transmission of utilities, gas, feedstock and other products. All lots will be reticulated with power, water and communications infrastructure. There is also potential for sites to be serviced with reticulated high and low pressure gas.

The Northern Territory Government has released its **5 Point NT Gas Strategy** to drive the Government's vision for the Territory as a world class hub for gas production, manufacturing and services by 2030.

The Strategy includes 5 main achievable targets:

1. More LNG in Darwin and expand Darwin's LNG Export Hub
2. Grow the gas supply and service industry
3. Establish a gas manufacturing industry
4. Grow research, innovation and training capacity; and
5. Contribute to national energy security on the East Coast

## Fast facts



30 MINUTES  
TO DARWIN CBD



25 MINUTES  
TO DARWIN PORT



15 MINUTES  
TO PALMERSTON CBD



25 MINUTES  
TO ALL-TIDE BARGE RAMP





# MARINE INDUSTRY PARK

## NORTHERN AUSTRALIA'S MARINE SERVICING HUB

### The vision

Expanding on existing assets to create Northern Australia's largest and most efficient marine servicing hub, catering for all vessels. The expansion of the Marine Industry Park will introduce a 5,000 tonne Ship Lift, marine service and training facilities, workshops and other amenities.

### Current status

Existing marine facilities located within the Marine Industry Park include the **Barge Ramp** which is an accredited First Point of Entry for the Port of Darwin and a secure **9 hectare Hardstand** with 24/7 access for storage and fabrication activities. Both amenities are available for licence and use.

Planning approval has been secured for a purpose-built industrial subdivision located only 400 metres from the 5,000 tonne Ship Lift and Barge Ramp, for various sized vessel maintenance and fabrication workshops. Expressions of Interest for serviced lots are currently open. We welcome enquiries to assist in informing optimal lot design, best suited to future occupant's needs.



**Land Development Corporation**

Level 2, 37 Woods Street

DARWIN NT 0800

P: 08 8944 0900

E: [enquiries@landdevcorp.com.au](mailto:enquiries@landdevcorp.com.au)

[www.landdevcorp.com.au](http://www.landdevcorp.com.au)