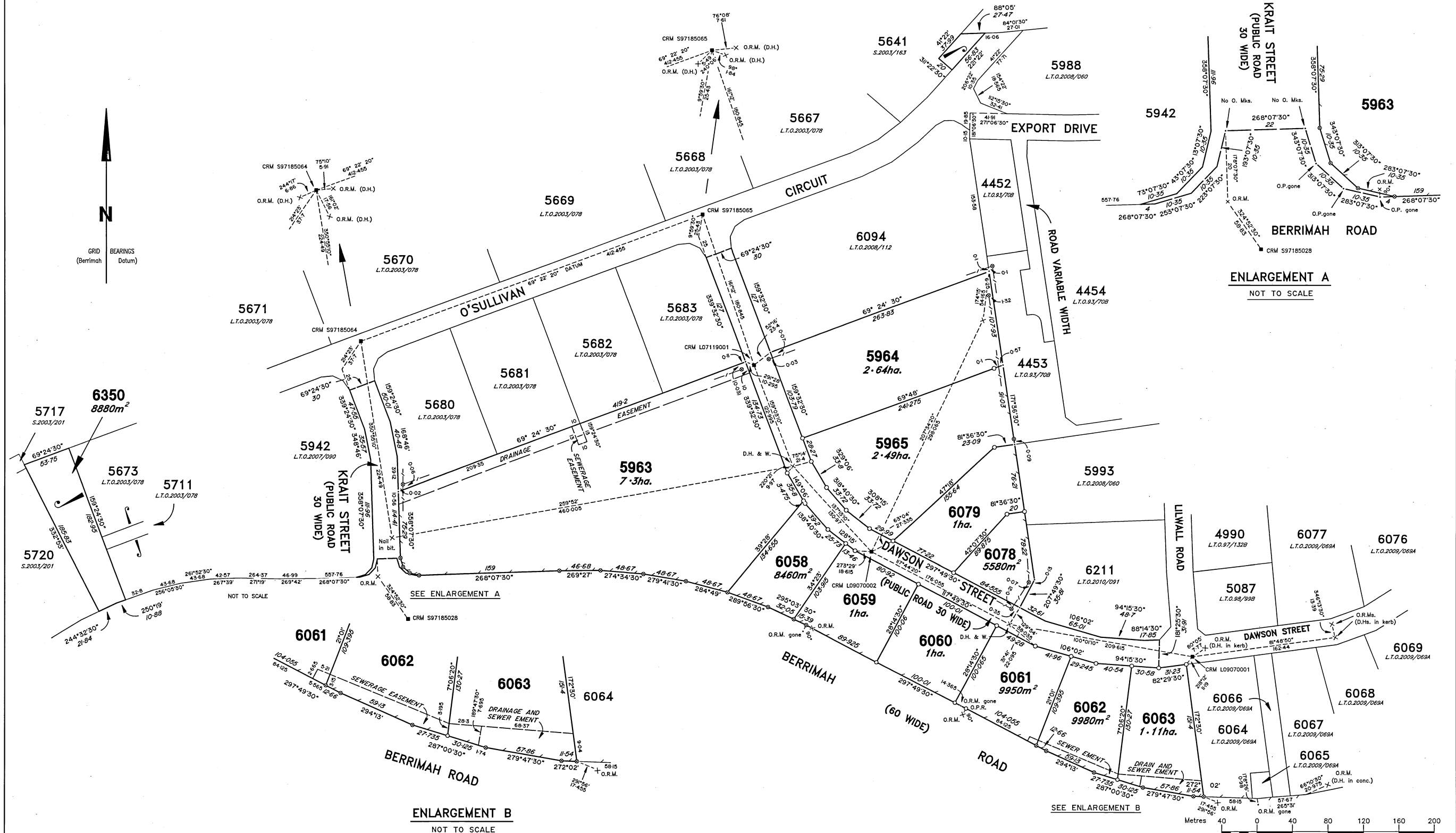


SUPERSEDES PARTS OF L.T.O.2011/064 AND L.T.O.2009/069A AND L.T.O.2007/096



**SECTIONS 5963 TO 5965, 6058 TO 6063, 6078, 6079 AND 6350**  
**SUBDIVISION OF SECTIONS 5957, 6121 AND 6243**  
**HUNDRED OF BAGOT**

Drawn by B.T.D. 16.12.2011 (253153)	Assumed from AZIMUTH LTO 2003/078	SCALE 1:2000
Examined by Vekta Pty Ltd 17.12.2011	Observed at	<b>L.T.O.2009/070B</b> SHEET 2 OF 2

**SURVEYOR'S CERTIFICATE**  
 I, Gregg Nicholas Hestelov  
 hereby certify that the survey represented on this plan was carried out by me or under my supervision and was completed on 02 December 2011 and that this survey has been executed in accordance with the Licensed Surveyors Act and the Directions thereunder.  
 Signed: *Gregg Nicholas Hestelov*  
 Licensed Surveyor Date: 21/12/11

**CONSENT OF PROPRIETOR OF REGISTERED INTEREST(S)**  
 Consent is hereby given to the proposed subdivision as depicted hereon.  
 Signed: \_\_\_\_\_

**SUBMISSION APPLICATION TO THE REGISTRAR-GENERAL**  
 I/We hereby apply, pursuant to section 51 of the Land Title Act, for issue of new titles in accordance with the subdivision hereon.  
 Executed for and behalf of:  
 Land Development Corporation  
 Signed: *[Signature]*  
 AUTHORIZED DELEGATE  
 Date: 13/11/12  
 C.T. Volume 766 Folio 668  
 C.T. Volume 766 Folio 669  
 C.T. Volume 766 Folio 670

**SURVEY APPROVAL**  
 I, Garry James West the Surveyor-General, being satisfied that part 5 of the Planning Act has been complied with:  
 (i) approve the survey under section 49 of the Licensed Surveyors Act;  
 (ii) acknowledge on behalf of the Service Authorities designated the vesting of the Service Easements shown hereon; and  
 (iii) accept, on behalf of the Service Authorities specified, the land designated as roads or reserves hereon vested pursuant to section 64 of the Planning Act and section 7 of the Control of Roads Act.  
 Signed: *[Signature]*  
 Deputy Surveyor-General Date: 16-5-2012

**NOTE:** Reference marks are at one metre unless otherwise shown.  
 Public Roads are vested in the Northern Territory of Australia.  
 Sewerage Easements are in favour of the Power and Water Corporation.  
 Drainage Easements are in favour of the Northern Territory of Australia.  
 The dimensions of unmarked lines are original unless otherwise shown.

WARNING - Damaged or creased plan will be rejected